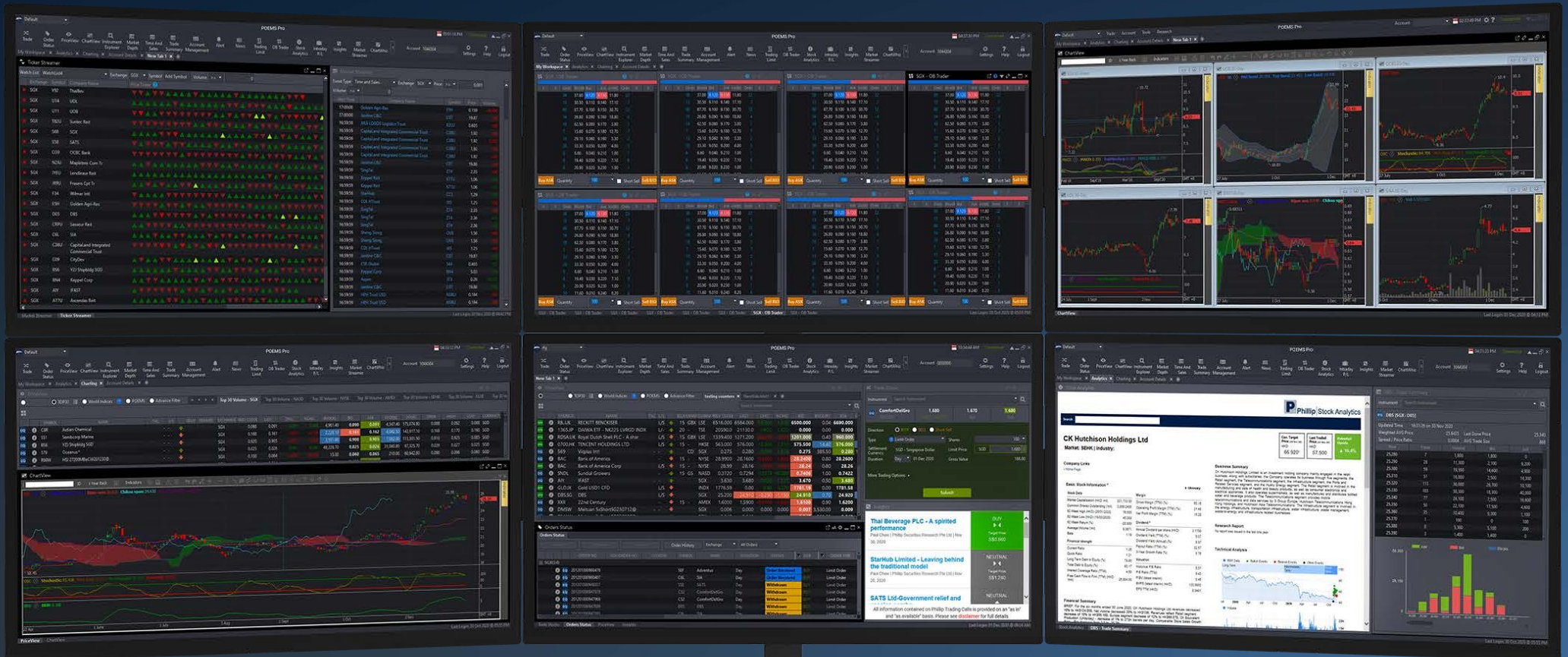


POEMS Global My

Designed by Traders, for Traders





CONTENTS

OVERVIEW 2

HOW TO TRADE

Trade Ticket	3
Submitting a Trade	4
Order Types Order	5
Status Trade	6
Settings	7

HOW TO MONITOR THE MARKET

Price View and Watchlists	9
Chart View	10
Market Depth	12
Time and Sales	12
Trade Summary	13
News and Stock Analytics	14
Alerts	15
Market Streamer	16
Insights	17

HOW TO MANAGE YOUR ACCOUNT

Account Management	19
Intraday Profit/Loss	20
Trading Limit	20

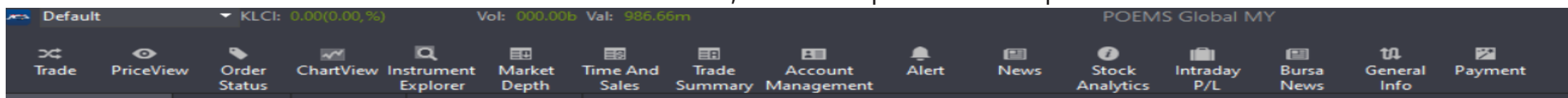
HOW TO CUSTOMISE THE PLATFORM

Workspaces and Tabs	19
Windows and Multi-screens	20
Settings	22
Themes & Languages	23
Keyboard Shortcuts	24

OVERVIEW

Main Navigation Toolbar

Access all POEMS Global MY 2 features and tools, edit workspaces and set preferences



- a.** Open the trade ticket to place buy/sell orders
- b.** View price data for all counters on Top 30 lists or Watchlists
- c.** View the real time status of all types of orders carried out on the same trading day or past orders
- d.** Open single or multiple charts in a single window
- e.** Search for any counter from all available markets and add to a watchlist, place a trade, etc.
- f.** View volume of trades at available buy/sell prices in the market
- g.** View time and sales data of specific counters
- h.** View stock movement in terms of volume traded at various price levels
- i.** Review your account and other related information
- j.** Set Price Alerts according to your defined criteria
- k.** Get real-time market news or search for counter-specific news updates
- l.** Get insights to listed companies' fundamental, valuations and operating performance
- m.** View your realized/unrealized trades for the current trading day
- n.** Get real-time market news from Bursa
- o.** General Info for the stock
- p.** Make Payment via FPX

HOW TO TRADE

Trade Ticket | Submitting a Trade | Order Types | Order Status | Trade Settings

Trade Ticket



- a) Search for any counter by name or code
- b) Counter details
- c) Order Direction; Buy, Sell
- d) Order Type; Limit, Market, Stop Limit
- e) Settlement Currency of current order
- f) Order Duration (GTD up to 30 days)
- g) Quantity of share

- h) Set price
- i) Gross value based on price and quantity
- j) Order details
- k) Enter password to confirm (You can disable this in settings)
- l) Option to not showing the confirmation screen again

HOW TO TRADE

Trade Ticket | **Submitting a Trade** | Order Types | Order Status | Trade Settings

Submitting a Trade

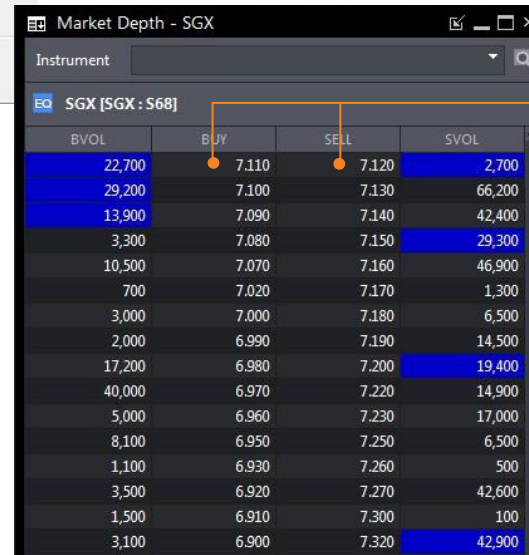
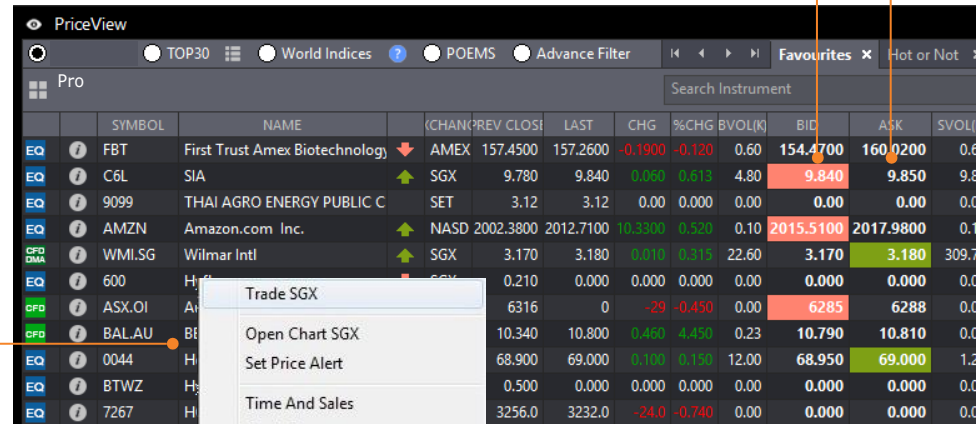
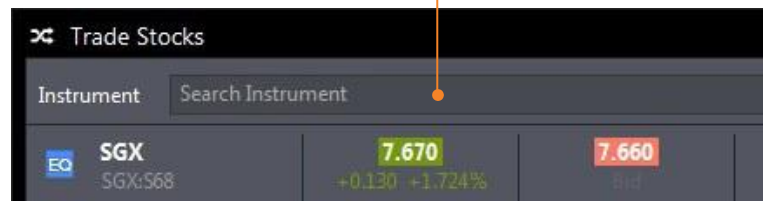
10 Ways to Submit a Trade

1. Double-click on a counter to open a new Trade Ticket or click once if Trade Ticket is opened and linked

2. Right-Click on counter and click Trade

3. Drag any counter from Price View/Instrument Explorer into an open Trade Ticket.

4. Search for any counter with the search bar on the Trade Ticket to bring up the counter details



5. Double-click on the BVOL, BID, ASK or SVOL price of the counter to open a new Trade Ticket with the selected price/quantity or click once if a Trade Ticket is already opened

6. Trade from Order Status
Right-click on counter in Order Status and click Trade to open new Trade Ticket

7. Trade from Time and Sales
Double-click the price in the prices column of the counter to open a new Trade Ticket with the selected price

8. Trade from Market Depth
Double-click on the BUY or SELL price of the counter to open a new Trade Ticket with the selected price

9. Trade from Trade Summary
Double-click on the price in the prices column of the counter to open a new Trade Ticket with the selected price

10. Trade through OB Trader
See next page.

HOW TO TRADE

Trade Ticket | Submitting a Trade | **Order Types** | Order Status | Trade Settings

ORDER TYPE	DEFINITION	EXCHANGES
Limit	<p>A Limit Order is an order to buy or sell a stock at a specific price or lower / higher.</p> <p>A Buy Limit Order can only be executed at the limit price or lower, and a Sell Limit Order can only be executed at the limit price or higher. A Limit Order can only be filled if the stock's market price reaches the limit price. While limit orders do not guarantee execution, they help ensure that an investor does not pay more than a pre-determined price for a stock.</p>	ALL Exchanges
Stop Limit	<p>A Stop Limit order is an order to buy or sell a stock once the price of the stock reaches a specified price, known as the Trigger Price. Once the trigger price is reached, a Stop Limit order becomes a limit order that will be executed at a specified price (or better).</p> <p>For Stop Limit GTD orders, the stop leg is GTD order while the triggered limit order is DAY order. Once an order is triggered, it will be expired by end of day if it is not fully done.</p>	KLSE
Market	<p>A Market Order is an order placement with a defined quantity but without a price. It will be traded at the best price currently available in the market.</p>	KLSE

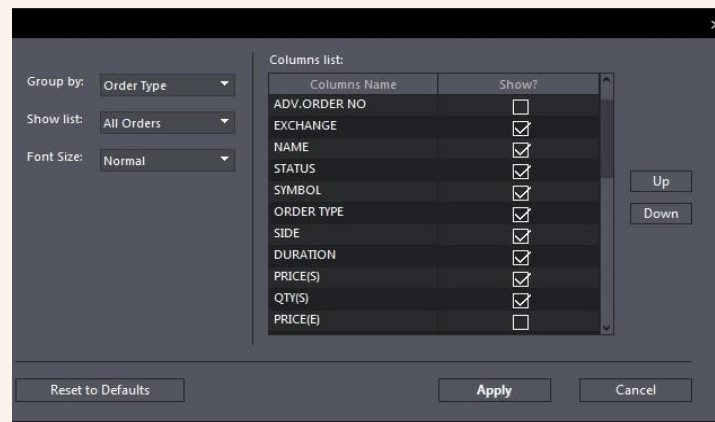
HOW TO TRADE

Trade Ticket | Submitting a Trade | Order Types | **Order Status** | Trade Settings

Order Status

	ORDER NO	CLORDID	SYMBOL	NAME	SIDE	STATUS	ORDER TYPE	DURATION	PRICE(S)	QTY(S)	PRICE(E)	QTY(E)	QTY(REM)	TRIGGERPRICE	ORDER TIME
Stop Limit Order(5)															
EQ	O9611907180000221		AMBO	Ambow Education - ADR	BUY	New Order	Stop Limit Order	Day	6.3400	1	0.000	0	1	6.4000	18 Jul 2019 09:45 AM
EQ	190718005393848		S68	SGX	BUY	Order Received	Stop Limit Order	Day	8.020	100	0.000	0	100	8.020	18 Jul 2019 09:43 AM
EQ	190718005393782		S58	SATS	BUY	Order Received	Stop Limit Order	Day	5.350	100	0.000	0	100	5.340	18 Jul 2019 09:42 AM
EQ	190718005393093		BN4	Keppel Corp	BUY	Order Received	Stop Limit Order	Day	6.640	100	0.000	0	100	6.650	18 Jul 2019 09:29 AM
EQ	190718005393091		BN4	Keppel Corp	BUY	Order Received	Stop Limit Order	Day	6.640	100	0.000	0	100	6.650	18 Jul 2019 09:29 AM
Limit Order(16)															
DFB	248199		DBS.SG	DBS	BUY	Order Received	Limit Order	Day	26.270	100	0.000	0	100	0.000	18 Jul 2019 09:44 AM
EQ	294792		601111	Air China Ltd	BUY	Order Received	Limit Order	Day	9.070	100	0.000	0	100	0.000	18 Jul 2019 09:44 AM
EQ	190718005393824		A68U	Ascott Reit	BUY	Order Received	Limit Order	Day	1.290	400	0.000	0	400	0.000	18 Jul 2019 09:43 AM
EQ	294773		JD	JD.com	BUY	Order Received	Limit Order	Day	30.7000	4	0.0000	0	4	0.0000	18 Jul 2019 09:42 AM
DFB	248095		UOB.SG	UOB	BUY	Order Received	Limit Order	Day	26.560	100	0.000	0	100	0.000	18 Jul 2019 09:28 AM
EQ	294314		8290	Ahsay Backup Software Development	BUY	Order Received	Limit Order	Day	0.049	10,000	0.000	0	10,000	0.000	18 Jul 2019 09:00 AM
DFB	246450		DBS.SG	DBS	BUY	Order Received	Limit Order	Day	26.260	100	0.000	0	100	0.000	17 Jul 2019 05:08 PM
EQ	288598		FNMA	Fannie Mae	SELL	Order Received	Limit Order	Day	2.0000	100	0.0000	0	100	0.0000	17 Jul 2019 04:06 PM
EQ	288593		FNMA	Fannie Mae	BUY	Order Received	Limit Order	Day	2.0000	100	0.0000	0	100	0.0000	17 Jul 2019 04:05 PM

- a. Amend orders
- b. Withdraw selected orders
- c. View order history of up to 7 days
- d. Filter orders by Exchange, Product Type, Order Type or Symbol
- e. Choose to display all orders or by order status
- f. Search Orders by counter name or symbol
- g. Click to show/hide different filter groups
- h. Click and hold to rearrange columns



Order Status Settings in Settings Menu

Order Status General Settings

Group by - Set default grouping by: Exchange, Product Type, Order Type or Symbol

Show list - Set default order types by different order status

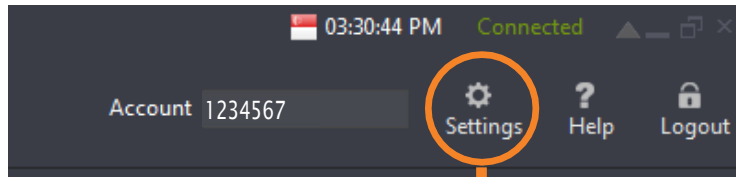
Font size - Set default font size: Normal, Medium or Large

Columns list - Set default column arrangement and attributes

HOW TO TRADE

Trade Ticket | Submitting a Trade | Order Types | **Order Status** | Trade Settings

Trade Settings



Trade Settings can be found under Settings at the top-right corner of the application

	Equities	CFD
Enable Trading	YES	YES
Trade Ticket Price Input Display	YES	YES
Max Buy Qty	1000000	10000000
Max Sell Qty	1000000	10000000
Default Qty For SEHK	1200	10000
Default Days For GTD	28	28

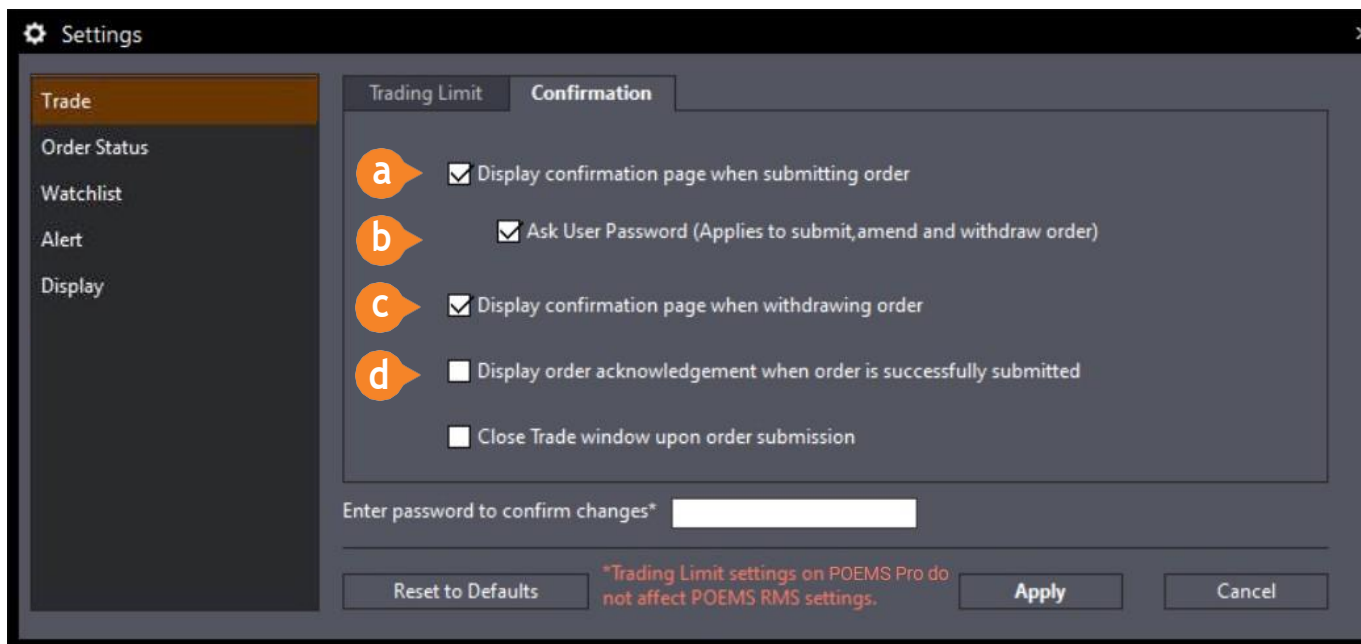
Trading Limit Settings

Settings	Default	Meaning
Enable Trading	Yes	If Changed to “no”, a popup window will pop when user click submit in the trade ticket. The message will say “Trading is disabled, please enable it in setting.”
Trade Ticket Price Input display	Yes	If Changed to “no”, the shares and Limit price on the trade ticket will not display. User can choose to key in the price.
Max Buy Qty	1,000,000	Maximum of shares allowed on the Buy trade ticket.
Max Sell Qty	1,000,000	Maximum of shares allowed on the Sell trade ticket.
Default Settlement Currency	SGD	The chosen settlement currency in the trade ticket will be populated in the trade ticket.
Default Days for GTD	5	The number of days for GTD.
Default Qty for SGX, KLSE, NASD, NYSE, AMEX, SEHK, SSE, SET	1	This is the default display quantity for the exchange. Please choose exchange from dropdown. If quantity is less than minimum lot size of the counter, the minimum lot size will show.

HOW TO TRADE

Trade Ticket | Submitting a Trade | Order Types | **Order Status** | Trade Settings

Trade Settings (Confirmation)



Confirmation Settings

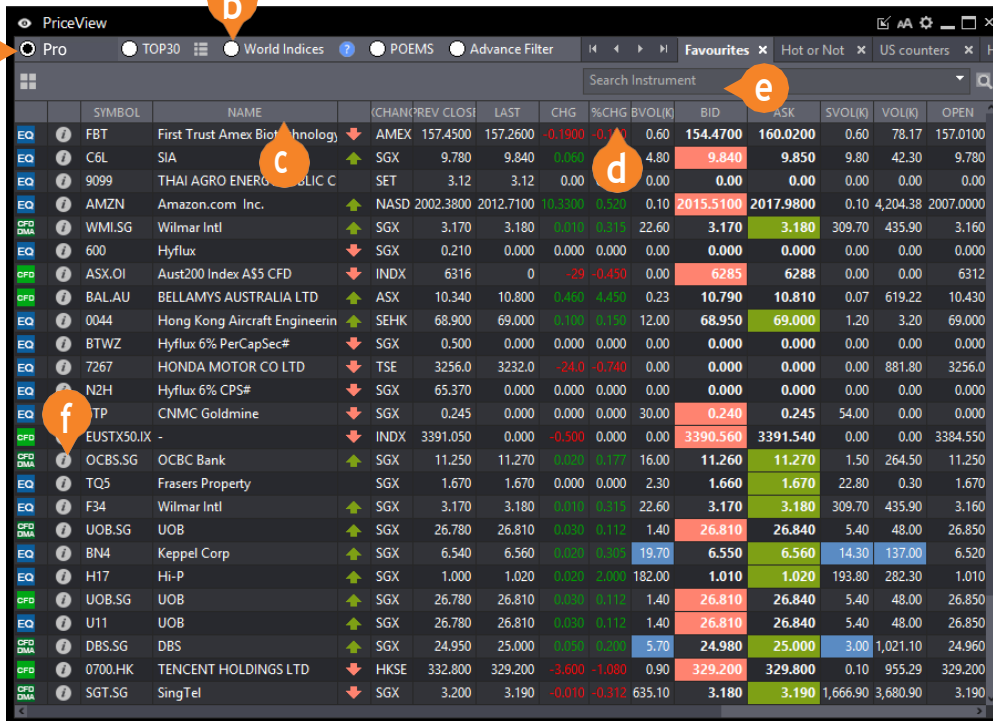
- a.** When **unchecked**, confirmation page will not be displayed during order submission
- b.** When **unchecked**, no password input order confirmation would be required
- c.** When **unchecked**, no confirmation page will be displayed when withdrawing order
- d.** When **unchecked**, no order acknowledgement will be displayed when order is submitted successfully
- e.** When **unchecked**, Trade Ticket window will remain open after order submission

HOW TO MONITOR THE MARKET

Price View and Watchlists | Chart View | Market Depth | Time and Sales | Trade Summary | News and Stock Analytics | Alerts | Market Streamer | Insights

Price View and Watchlists

View real-time price data for all counters on Top 30 lists or Watchlists



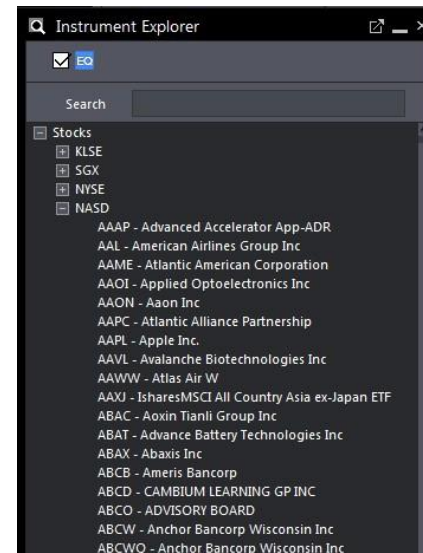
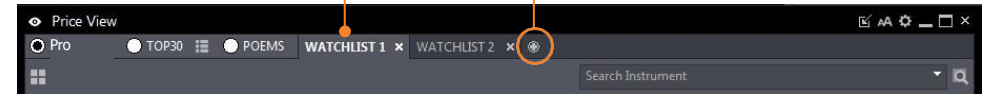
	SYMBOL	NAME	(CHAN)	REV	CLOSI	LAST	CHG	%CHG	BVOLIK	BID	ASK	SVOLIK	VOLIK	OPEN
EQ	FBT	First Trust Amex Biotechnology	AMEX	157.4500	157.2600	-0.1900	-0.1%	0.60	154.4700	160.0200	0.60	78.17	157.0100	
EQ	C6L	SIA	SGX	9.780	9.840	0.060	0.6%	4.80	9.840	9.850	9.80	42.30	9.780	
EQ	9099	THAI AGRO ENERGY PUBLIC C	SET	3.12	3.12	0.00	0.0%	0.00	0.00	0.00	0.00	0.00	0.00	
EQ	AMZN	Amazon.com Inc.	NASD	2002.3800	2012.7100	10.3300	0.52%	0.10	2015.5100	2017.9800	0.10	4,204.38	2007.0000	
EQ	WMI.SG	Wilmar Intl	SGX	3.170	3.180	0.010	0.31%	22.60	3.170	3.180	309.70	435.90	3.160	
EQ	600	Hyflux	SGX	0.210	0.000	0.000	0.00%	0.00	0.000	0.000	0.00	0.00	0.000	
EQ	ASX.OI	Aust200 Index AS5 CFD	INDX	6316	0	-29	-0.45%	0.00	6285	6288	0.00	0.00	6312	
EQ	BAL.AU	BELLAMYS AUSTRALIA LTD	ASX	10.340	10.800	0.460	4.45%	0.23	10.790	10.810	0.07	619.22	10.430	
EQ	0044	Hong Kong Aircraft Engineerin	SEHK	68.900	69.000	0.100	0.15%	12.00	68.950	69.000	1.20	3.20	69.000	
EQ	BTWZ	Hyflux 6% PerCapSec#	SGX	0.500	0.000	0.000	0.00%	0.00	0.000	0.000	0.00	0.00	0.000	
EQ	7267	HONDA MOTOR CO LTD	TSE	3256.0	3232.0	-24.0	-0.74%	0.00	0.000	0.000	0.00	881.80	3256.0	
EQ	N2H	Hyflux 6% CPS#	SGX	65.370	0.000	0.000	0.00%	0.00	0.000	0.000	0.00	0.00	0.000	
EQ	TP	CNMC Goldmine	SGX	0.245	0.000	0.000	0.00%	30.00	0.240	0.245	54.00	0.00	0.000	
EQ	EUSTX50.IX		INDX	3391.050	0.000	-0.500	0.00%	0.00	3390.560	3391.540	0.00	0.00	3384.550	
EQ	OCBS.SG	OCBC Bank	SGX	11.250	11.270	0.020	0.17%	16.00	11.260	11.270	1.50	264.50	11.250	
EQ	TQ5	Fraser's Property	SGX	1.670	1.670	0.000	0.00%	2.30	1.660	1.670	22.80	0.30	1.670	
EQ	F34	Wilmar Intl	SGX	3.170	3.180	0.010	0.31%	22.60	3.170	3.180	309.70	435.90	3.160	
EQ	UOB.SG	UOB	SGX	26.780	26.810	0.030	0.11%	1.40	26.810	26.840	5.40	48.00	26.850	
EQ	BN4	Keppel Corp	SGX	6.540	6.560	0.020	0.30%	19.70	6.550	6.560	14.30	137.00	6.520	
EQ	H17	Hi-P	SGX	1.000	1.020	0.020	2.00%	182.00	1.010	1.020	193.80	282.30	1.010	
EQ	UOB.SG	UOB	SGX	26.780	26.810	0.030	0.11%	1.40	26.810	26.840	5.40	48.00	26.850	
EQ	U11	UOB	SGX	26.780	26.810	0.030	0.11%	1.40	26.810	26.840	5.40	48.00	26.850	
EQ	DBS.SG	DBS	SGX	24.950	25.000	0.050	0.20%	5.70	24.980	25.000	3.00	1,021.10	24.960	
EQ	0700.HK	TENCENT HOLDINGS LTD	HKSE	332.800	329.200	-3.600	-1.08%	0.90	329.200	329.800	0.10	955.29	329.200	
EQ	SGT.SG	SingTel	SGX	3.200	3.190	-0.010	-0.31%	635.10	3.180	3.190	1,666.90	3,680.90	3.190	

- Select Watchlist group (Pro, Top 30, World Indices, POEMS MY 2.0 imported Watchlists, Advance Filter)
- Dropdown menu to select Top 30 list by criteria
- Right-click to add/remove column fields
- Click and hold to rearrange columns
- Search for any counter and click to add to existing watchlist
- Stock Analytics for respective counter

Double/right-click to rename, right-click to delete watchlist or click on X

Add New Watchlist

To add a new watchlist, click here



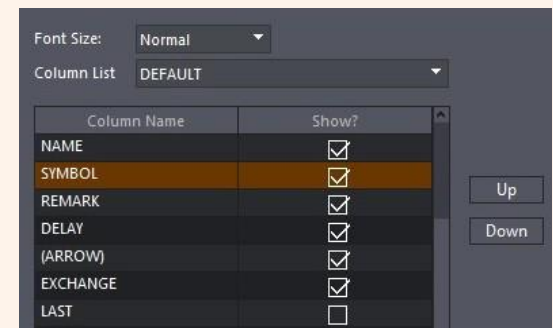
3 Ways to Add Counters to your Watchlists

- Right-click on counter in Price View and 'Add To Watchlist'. You can also hold shift to select multiple counters and add to watchlist at once
- Drag any counter from Instrument Explorer into an open Watchlist. Once again, hold shift to select and drag multiple counters at once.
- Search for any counter in the 'Search Instrument' bar and click to add to existing watchlist.

Instrument Explorer

Watchlist General Settings

Font size - Set default font size: Normal, Medium or Large
Columns list - Set default column arrangement and attributes



Watchlist Settings in Settings Menu

HOW TO MONITOR THE MARKET

Price View and Watchlists | **Chart View** | Market Depth | Time and Sales | Trade Summary | News and Stock Analytics | Alerts | Market Streamer | Insights

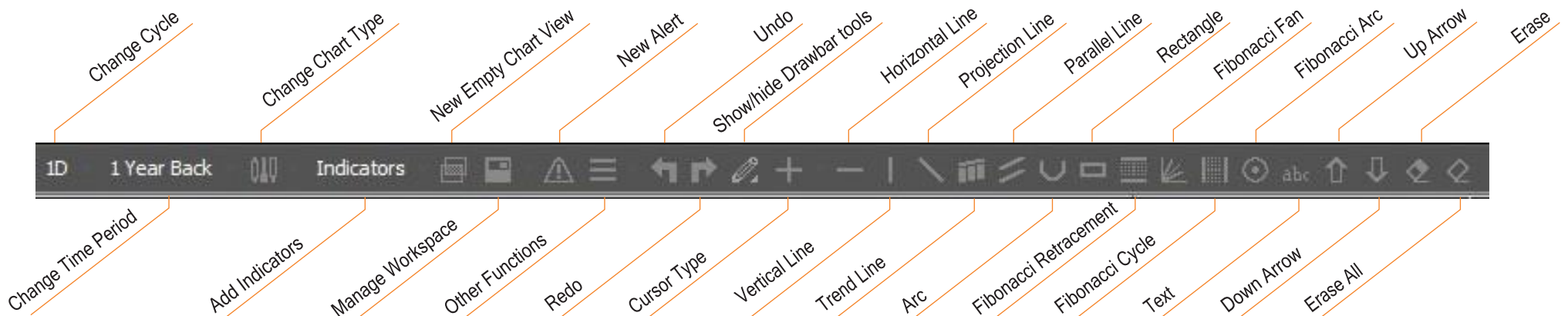
Chart View

Open single or multiple charts in a single window

- a. Search for any instrument and select to show chart
- b. Change cycle
- c. Change time period
- d. Change chart type
- e. Add indicators
- f. Show/hide drawbar tools
- g. Counter name and indicator details
- h. Legend and stock details
- i. Additional indicators



Drawing Tools



HOW TO MONITOR THE MARKET

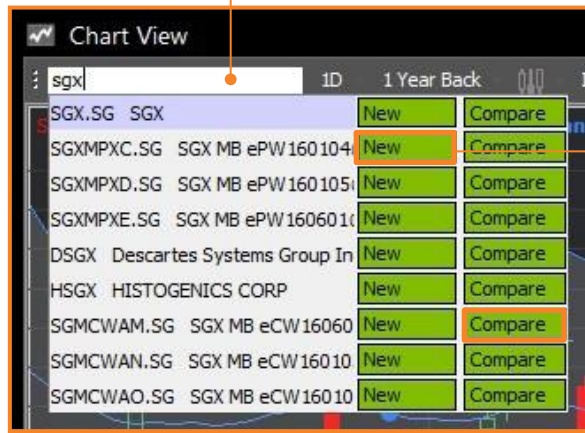
Price View and Watchlists | **Chart View** | Market Depth | Time and Sales | Trade Summary | News and Stock Analytics | Alerts | Market Streamer | Insights

Chart View

Open single or multiple charts in a single window

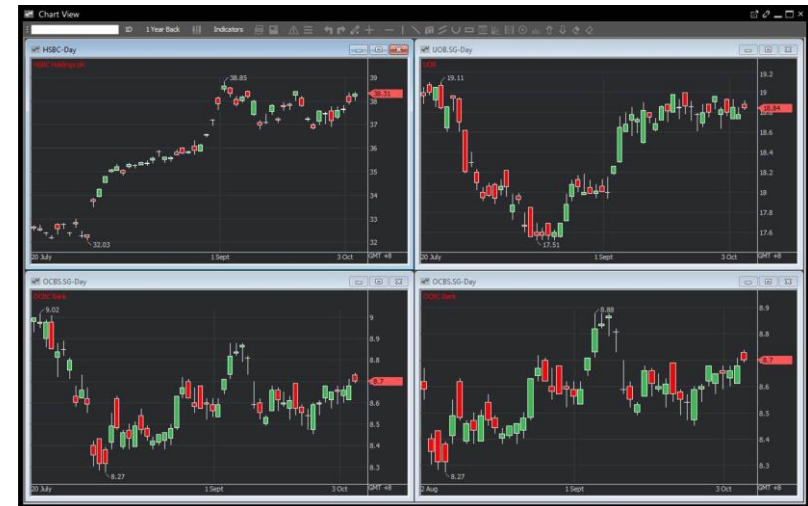
Search to add/compare different charts

Type in to search for any counter and drop-down menu will appear for search results



Click on **New** to add a chart of the selected counter in the existing Chart View window

Click on **Compare** to add a counter into the existing chart for comparison.



HOW TO MONITOR THE MARKET

Price View and Watchlists | **Chart View** | Market Depth | Time and Sales | Trade Summary | News and Stock Analytics | Alerts | Market Streamer | Insights

Market Depth

View a total list of the available SGX/HKEx buy/sell prices in the queue

- a.** Search for any counter to bring up its Market Depth*. You can also drag the counter from Price View / Instrument Explorer to Market Depth
- b.** Right click to select/de-select attributes
- c.** Click and hold to rearrange columns
- d.** Double-click on the BUY or SELL price to open a new Trade Ticket with the selected price

BVOL	BUY	SELL	SVOL
22,700	7.110	7.120	2,700
29,200	7.100	7.130	66,200
13,900	7.090	7.140	42,400
3,300	7.080	7.150	29,300
10,500	7.070	7.160	46,900
700	7.020	7.170	1,300
3,000	7.000	7.180	6,500
2,000	6.990	7.190	14,500
17,200	6.980	7.200	19,400
40,000	6.970	7.220	14,900
5,000	6.960	7.230	17,000
8,100	6.950	7.250	6,500
1,100	6.930	7.260	500
3,500	6.920	7.270	42,600
1,500	6.910	7.300	100
3,100	6.900	7.320	42,900
1,000	6.880	7.420	1,000
3,500	6.870	7.600	12,000
8,000	6.860	7.690	5,000

* SGX Market Depth and Hong Kong Exchange Live Price subscriptions are required for the respective markets

Time and Sales

View time and sales data of specific counters

Time	Price	Trade Size	Type
10:23:43	7.090	200	Sell Down
10:23:43	7.090	200	Sell Down
10:23:43	7.090	200	Sell Down
10:23:43	7.090	200	Sell Down
10:23:43	7.090	600	Sell Down
10:23:43	7.090	200	Sell Down
10:23:39	7.100	100	Buy Up
10:22:49	7.090	800	Sell Down
10:22:41	7.100	100	Buy Up
10:22:41	7.100	300	Buy Up
10:22:41	7.100	100	Buy Up
10:22:41	7.100	600	Buy Up
10:22:41	7.100	200	Buy Up
10:22:41	7.100	100	Buy Up
10:22:41	7.100	100	Buy Up
10:22:41	7.100	100	Buy Up
10:22:41	7.100	100	Buy Up
10:22:40	7.100	900	Buy Up

- a.** Search for any counter to bring up its Time and Sales, you can also drag the counter from Price View / Instrument Explorer to Time and Sales
- b.** Selected counter's daily trade summary / information
- c.** Click and hold to rearrange columns
- d.** Double-click the price to open a new Trade Ticket with the selected price

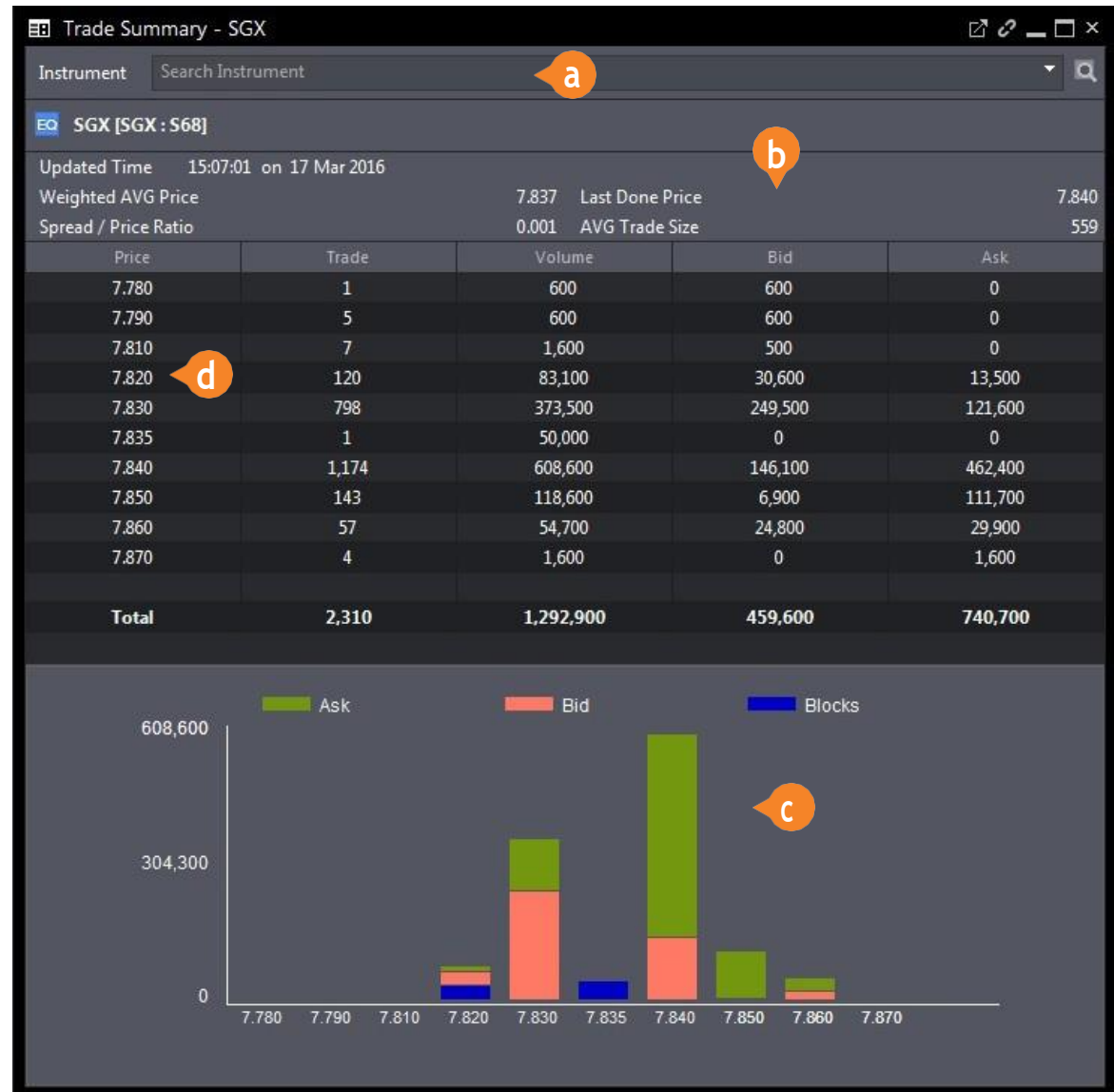
HOW TO MONITOR THE MARKET

Price View and Watchlists | **Chart View** | Market Depth | Time and Sales | Trade Summary | News and Stock Analytics | Alerts | Market Streamer | Insights

Trade Summary

This summary shows the stock movement in terms of volume traded at different price levels

- a.** Search for any counter to bring up its Trade Summary. You can also drag the counter from Price View / Instrument Explorer to Trade Summary
- b.** Counter Trade Statistics
- c.** Volume and Price visualized in bar graph
- d.** Double-click on the price to open a new Trade Ticket with the selected price



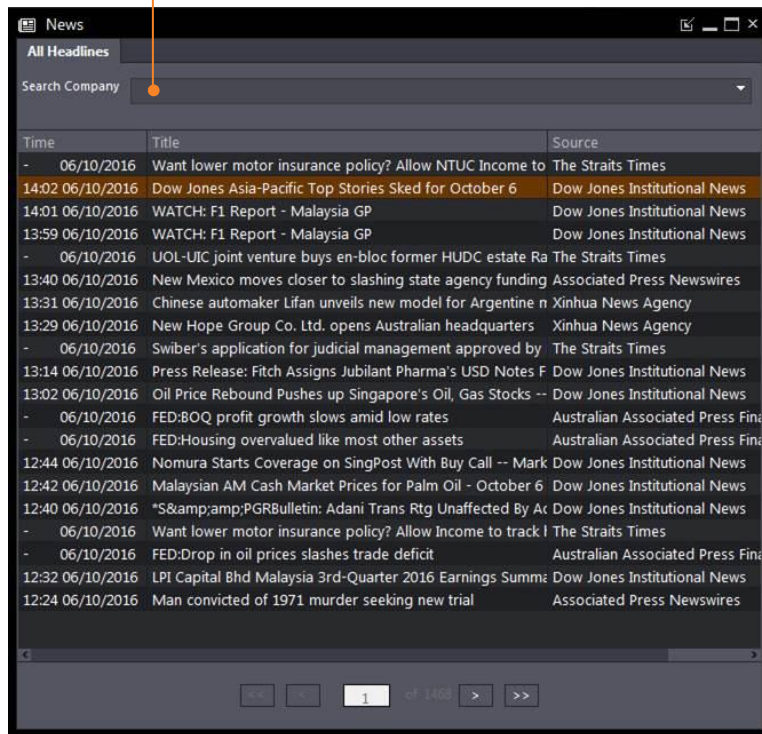
HOW TO MONITOR THE MARKET

Price View and Watchlists | **Chart View** | Market Depth | Time and Sales | Trade Summary | News and Stock Analytics | Alerts | Market Streamer | Insights

News

Access market news from around the world with Factiva

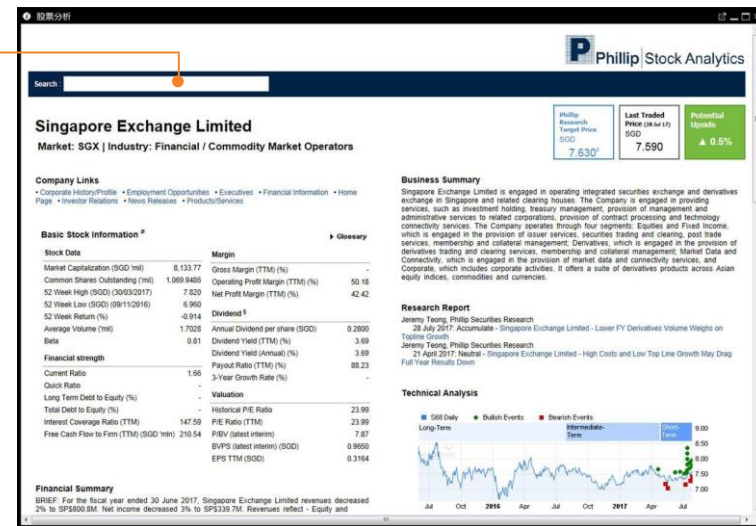
Search for any news article by stock name or related words



Stock Analytics

Phillip Stock Analytics gives you insights to listed companies' fundamental, valuations and operating performance

Search for Stock by name



Access Stock Analytics from Price View / Watchlists

Click to access Stock Analytics of that specific stock



Right-click counter to select Stock Analytics from menu

Price View

HOW TO MONITOR THE MARKET

Price View and Watchlists | **Chart View** | Market Depth | Time and Sales | Trade Summary | News and Stock Analytics | Alerts | Market Streamer | Insights

Alerts

Set Price Alerts according to your defined criteria

a New **b** Update **c** Remove

	Exchange	Symbol	Name	Trigger Once	Validity	Delay	Alert When	Current Value	Alert Via	Status	
<input type="checkbox"/>	EO	SEHK	2322.HK	Noble Century Inv Holdir	Once	04 Mar 2016	15	Bid Price >= 6.5900	6.5800	Pro	Active
<input type="checkbox"/>	EO	SGX	D05.SG	DBS	Once	08 Mar 2016		Ask Price <= 15.250	15.280	Pro	Active
<input type="checkbox"/>	EO	SGX	BN4.SG	Keppel Corp	Multiple	18 Mar 2016		Ask Price <= 6.030	6.010	Pro	Active

- a.** Click to add new Price Alert
- b.** Update settings of existing Price Alerts
- c.** Remove existing Price Alerts
- d.** Search for counter by name or symbol to bring up selected counter's details

d

Instrument Search Instrument

SGX 7.690 7.680 7.690
SGX:S68.SG +0.150 +1.989% Bid Ask

Alert me by Pro

Alert me when Bid Price

is Less Than or Equal

to 7.660

Valid until 04 Mar 2016

Trigger Type Once

Submit

Set Price Alert from Watchlist

	SYMBOL	NAME	
EO	B2F	M1	↑
EO	CC3	StarHub	↑
EO	D05	DBS	↑
EO	5238	AirAsia X	↑
EO	AAPL	Apple Inc.	↑
EO	GPRO	GOPRO INC	↑

- Trade SGX
- Open Chart SGX
- Set Price Alert**
- Time And Sales
- Trade Summary
- Stock Analytics
- Market Depth
- Add To Watchlist
- Remove From Watchlist

Price View

Click to open Price Alert window to set Price Alert for selected counter

Settings

Order Alert Price Alert

Display Alert When the Order is

Done /Close Rejected Amended Withdrawn

Show Alert Message permanently

10 seconds
20 seconds
30 seconds

Reset to Defaults Apply Cancel

Alert Settings in Settings Menu

Order Alert - Set which order status(s) would display alerts: Done, Rejected, Amended, Withdrawn

Price Alert - Set which price alert status(s) to be displayed in Price Alert View: ALL, Triggered, Active, Expired

Show Alert Message - Set how long the alert message is displayed

ed

HOW TO MANAGE YOUR ACCOUNT

Account Management | Intraday Profit / Loss | Trading Limit

Account Management

Review your account and other related information

EQ

a. Outstanding Positions

All your outstanding positions due for payment

b. Account Details

Account ledger details

c. Scrip Positions

For all accounts except Cash Trading accounts

d. This Month's Transactions

All your transactions for the current month

e. Transactions History

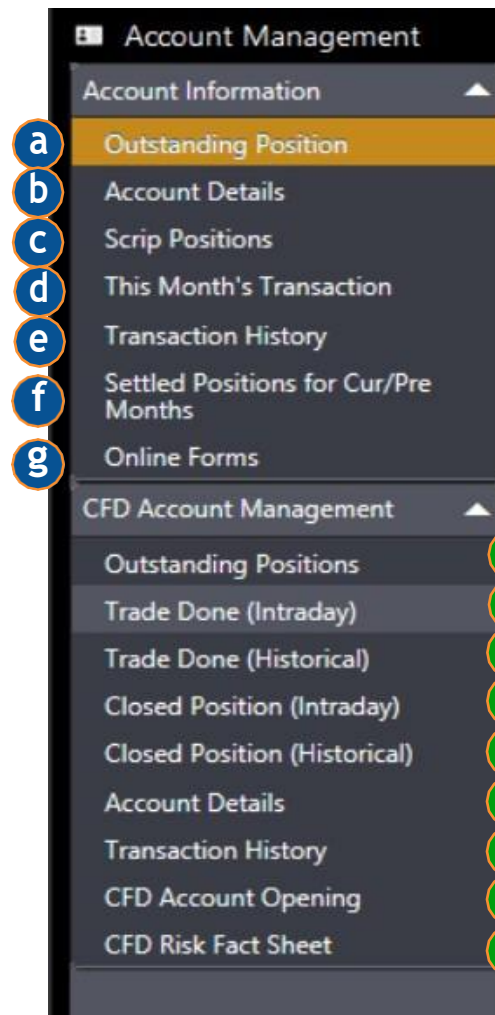
All your transactions for the past 1 year

f. Settled Positions for Current and Previous Month

Lists down the outstanding positions successfully settled for the current and previous months

g. Online Forms

Currently not available



CFD

h. Outstanding Positions

All outstanding CFD positions

i. Trade Done (Intraday)

Details on CFD trades done within the current trading day

j. Trade Done (Historical)

Details of CFD trades done in the past (Up to 6 months)

k. Closed Position (Intraday)

Details on CFD positions closed within the current trading day

l. Closed Position (Historical)

Details on CFD positions closed in the past (Up to 6 months)

m. Account Details

Details on account ledger

n. Transaction History

All account transactions (Up to 6 months)

o. CFD Account Opening

Application form for the activation of the CFD Trading Facility

p. CFD Risk Fact Sheet

Risk Fact Sheet for CFDs to be read through and acknowledged by CFD Account Holders

HOW TO MANAGE YOUR ACCOUNT

Account Management | Intraday Profit / Loss | Trading Limit

Intraday Profit / Loss

See how well your portfolio is performing real-time

a. Open Profit/Loss

Shows the real time intraday open position and its profit/loss

b. Close Profit/Loss

Shows the profit/loss of intraday closed or liquidated positions

Stock Name	Status	Executed Qty	Avg. Price	Market Last	Exg Rate	Open P/L (SGD)
1	2	3	4	5	6	7

Definitions

- 1. Stock Name** – The name of the counter that have been bought or sold
- 2. Status** – Buy/Sell action
- 3. Executed Qty** – The quantity that has been bought or sold for that counter. Sell outstanding trades will be displayed as negative quantity. Buy outstanding trades will be displayed as positive quantity
- 4. Avg. Price** – The average price will be calculated if there are multiple trades executed at different prices
- 5. Market Last Done** – The real time market last done price
- 6. Exg Rate** – Current exchange rate of the currency settled
- 7. Open P/L** – Shows your profit/loss for the current day. Which includes all open positions

Trading Limit

View available buy/sell limits and balance

Available Buy Limit: 1,000.00	Available Sell Limit: 1,000.00	Funds Balance: 0.00
-------------------------------	--------------------------------	---------------------

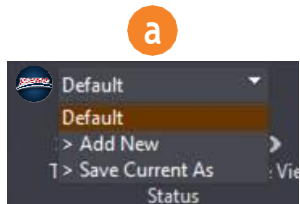
HOW TO CUSTOMISE THE PLATFORM

Workspaces and Tabs | Windows and Multi-Screen | Settings | Themes and Languages | Keyboard Shortcuts

Workspaces and Tabs

Workspace

A workspace is a collection of tabs. You can use the preset workspaces, modify them or create your own. In a workspace, you are not limited by the number of tabs you want.



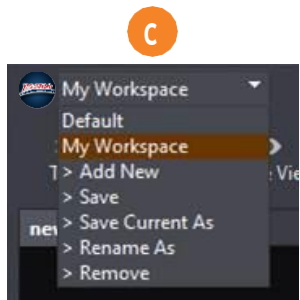
a. Selecting a Workspace

- Click on the workspace dropdown (see top left corner of the platform)
- Click on a preset workspace name or any previously added custom workspaces



b. Creating a New Workspace

- Click on the Workspace dropdown
- Click on > Add New. The dropdown will change into a text field
- Type in the name of your new workspace and press Enter



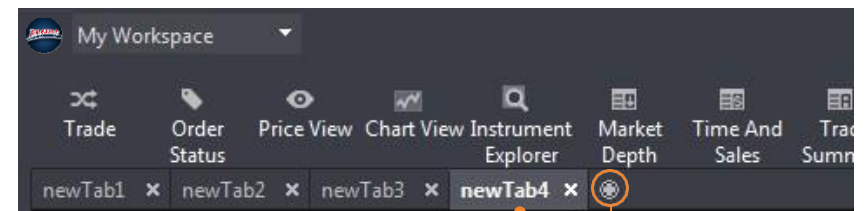
c. Saving/Duplicating/Renaming/Removing a Custom Workspace

- Select and load a custom workspace
- Click on the corresponding action item on the list (after the workspace names)

*Changes made in the default workspace are not saved and will not be reflected upon re-login to the platform

Tab

A tab is a container of windows. When you add a new tab, it is initially empty. You can then place and arrange as many windows inside a tab. Tabs can be added, deleted, renamed or rearranged.



Double/right-click to rename, right-click to delete watchlist or click on X

To add a new tab, click here

Adding a Tab

- Click on the + button found after the last tab

Removing a Tab

- Click on the x button found in the tab header

Rearranging Tabs

- Hold click and drag the tab header to the left or right

HOW TO CUSTOMISE THE PLATFORM

Workspaces and Tabs | Windows and Multi-Screen | Settings | Themes and Languages | Keyboard Shortcuts

Windows and Multi-Screen

Window

A window is any one of the modules that you can find in the Main Navigation Toolbar, each with specific functions and properties. Some windows can only be added once per tab, others can have several copies.

Adding a window inside a tab

- Click on your preferred tab
- Click on your preferred window from the Main Navigation Toolbar

Rearranging windows

- Hold click and drag the window header part and place drop anywhere the tab container space. Windows can overlap one another

Removing a Window

- Click on the x button found in the window header top-right corner



Multi-Screen Support

To fully utilize the capabilities of POEMS Pro, we would recommend using the platform with 3 additional screens.

Detaching Individual Windows



Click to detach window and drag out of the application or/and into another screen

Linking Individual Windows



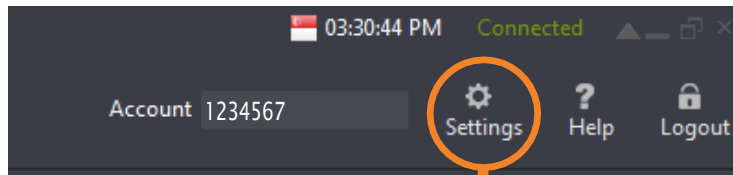
Click to link Trade and ChartView modules to PriceView. All linked windows will show the same counter details with just one click on the counter

HOW TO CUSTOMISE THE PLATFORM

Workspaces and Tabs | Windows and Multi-Screen | Settings | Themes and Languages | Keyboard Shortcuts

Settings

POEMS Pro allows you to modify particular window settings and functionality to empower your trading



a. Trade Settings

See [How To Trade > Trade Settings](#) to know more information about what each item means

b. Order Status Settings

See [How To Trade > Order Status](#) to know more information about what each item means

c. Watchlist Settings

See [How To Monitor the Market > Watchlist](#) to know more information about what each item means

d. Alert Settings

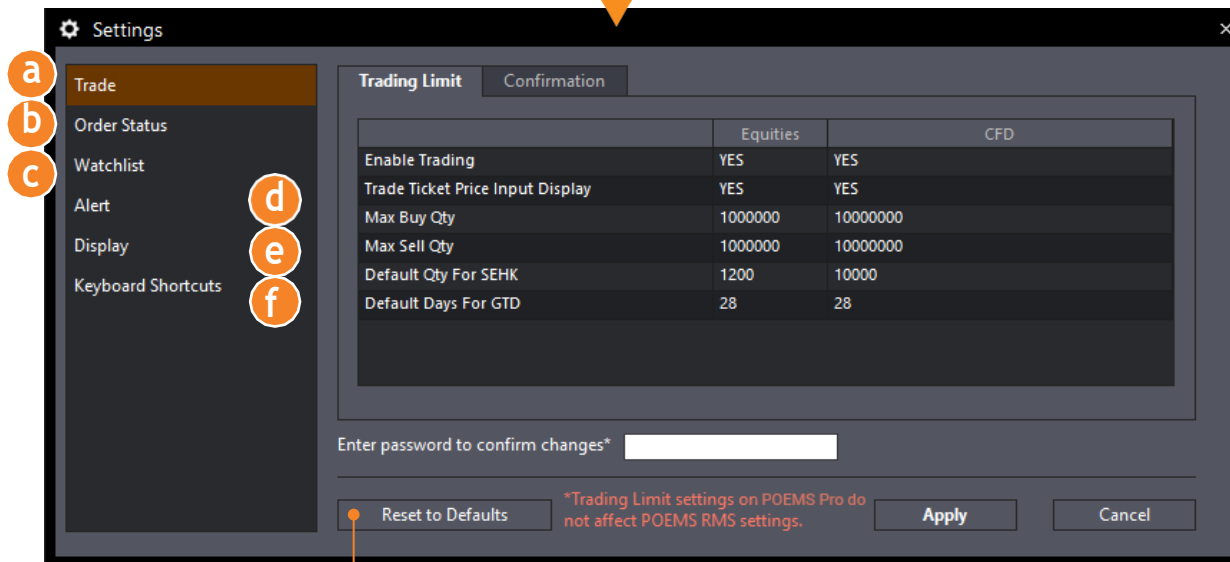
See [How To Monitor the Market > Alert](#) to know more information about what each item means

e. Display Settings

See [Themes and Languages](#) to know more information about what each item means

f. Keyboard Shortcuts

See [Keyboard Shortcuts](#) to know more information about what each item means



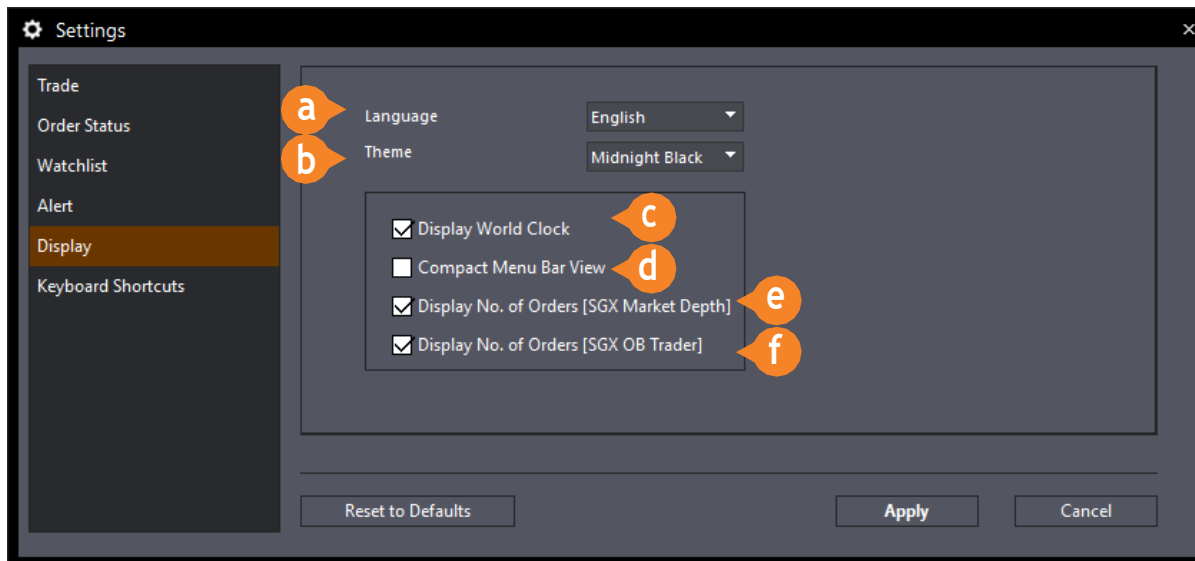
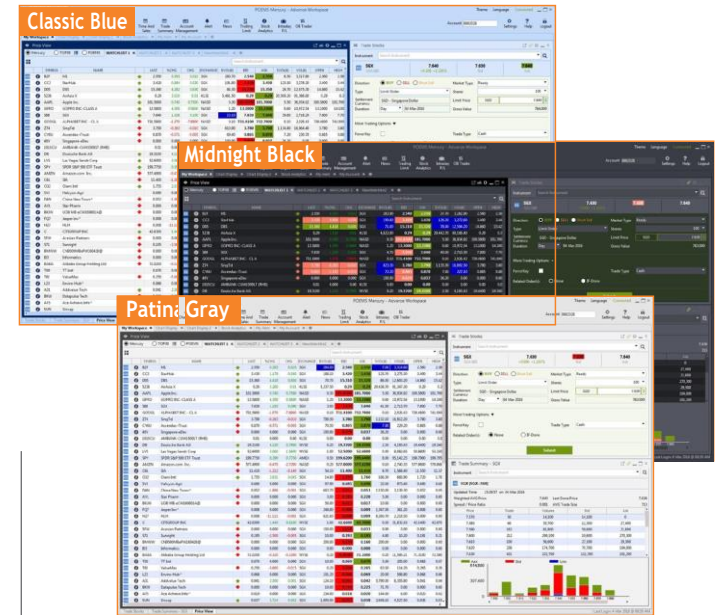
Reset all settings to default

HOW TO CUSTOMISE THE PLATFORM

Workspaces and Tabs | Windows and Multi-Screen | Settings | Themes and Languages | Keyboard Shortcuts

Themes and Languages

Further customize the platform according to your personal preferences with Themes and Languages



Display Settings

- a. Choose preferred language
- b. Select from 3 different themes, **Midnight Black**, **Classic Blue** and **Patina Gray**
- c. Choose to display World Clock at the top menu bar
- d. Choose to hide main navigation menu icons
- e. Choose to display No. of Orders in Market Depth
- f. Choose to display No. of Orders in OB Trader

HOW TO CUSTOMISE THE PLATFORM

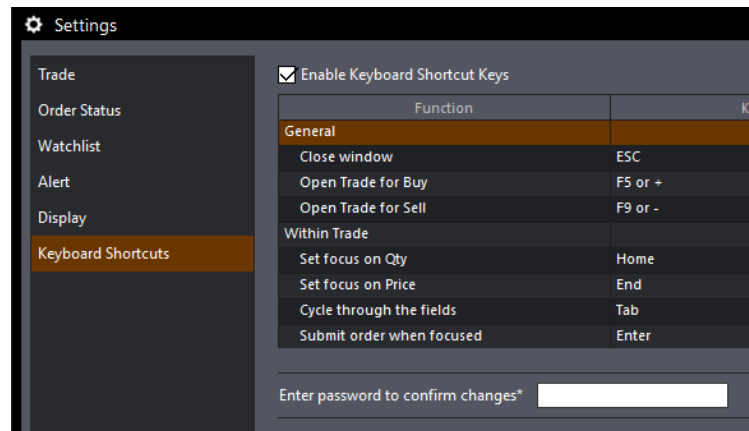
Workspaces and Tabs | Windows and Multi-Screen | Settings | Themes and Languages | **Keyboard Shortcuts**

Keyboard Shortcuts

Keyboard Shortcuts enables you to fill up trade tickets and send in your orders with greater ease and convenience

To enable Keyboard Shortcuts

- Go to Settings > Select 'Keyboard Shortcuts' from the main menu (left side)
- Check the 'Enable Keyboard Shortcut Keys' box at the top
- Enter your password to confirm

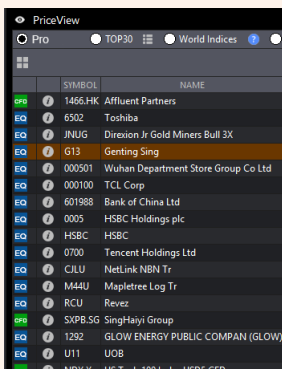


General (Default)	
Close Window	ESC
Open Trade for Buy	F5 or +
Open Trade for Sell	F9 or -

Within Trade (Default)	
Set focus on Qty	Home
Set focus on Price	End
Cycle through the fields	Tab
Submit order when focused	Enter
Toggle to Buy	F5 or +
Toggle to Sell	F9 or -

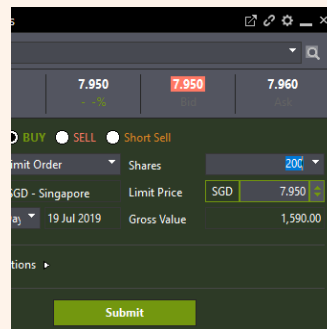
*Shortcut buttons can be changed in the settings

How to launch a ticket from the Watchlist & submit a trade with Keyboard Shortcuts



1

After you click on a counter on the Watchlist, press the **plus '+'** or **minus '-'** sign on your keyboard to launch a buy or sell trade ticket respectively

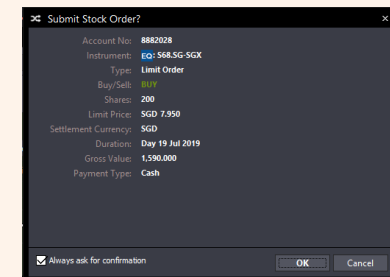
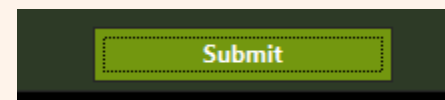


2

Then, enter the quantity you wish to trade, and press the **'Tab'** key to move to the price field.

3

Once you have ensured that the correct price is entered, press the **'Tab'** key again to move the focus to the Submit button. When you see a dotted box on the Submit button, press the **'Enter'** key and your order will be submitted.



4

Should you have had your order confirmation box enabled, you will have to press **'Enter'** once more to complete the trade submission.